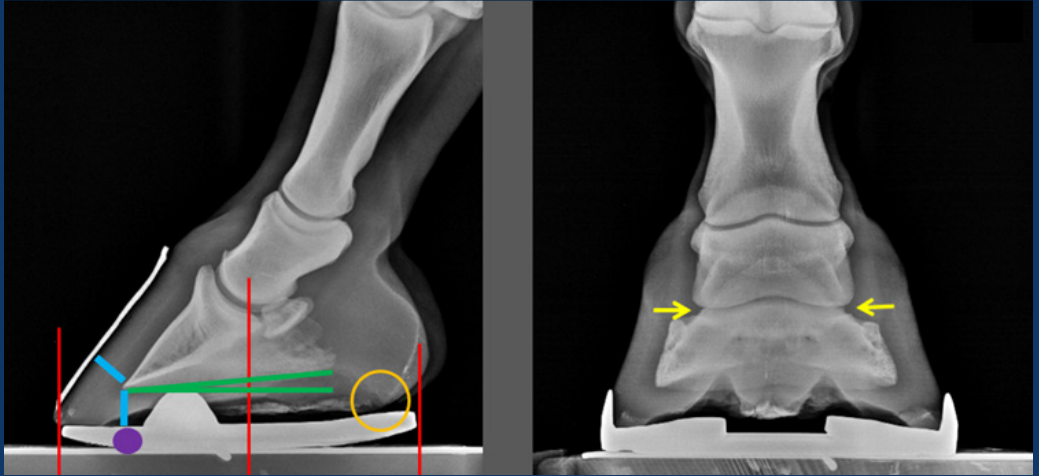




Shoeing Guidelines



Red: Dorsal/palmar balance of the hoof

The objective is for the vertical line from the rotation point of the hoof joint to fall in the middle of the shoe.

Blue: Sole depth

The breakover point should be under the tip of the coffin bone.

Green: Palmar/ plantar angle

The palmar (front hoof) and the plantar (hind hoof) angle should always be positive.

Orange: heels

The heels should be rasped back to the widest part of the frog.

Blue: Sole depth

The sole depth should be at least the same as the width of the Horn/laminae zone.

Yellow: Lateral / medial balance of the hoof

The lateral / medial balance of the hoof is correct when the intraarticular space of the hoof joint is the same on the medial and the lateral side of the joint.

Different types of shoeing are necessary according to hoof shape, limb conformation, health status and use of the horse. But I always try to follow these guidelines.